



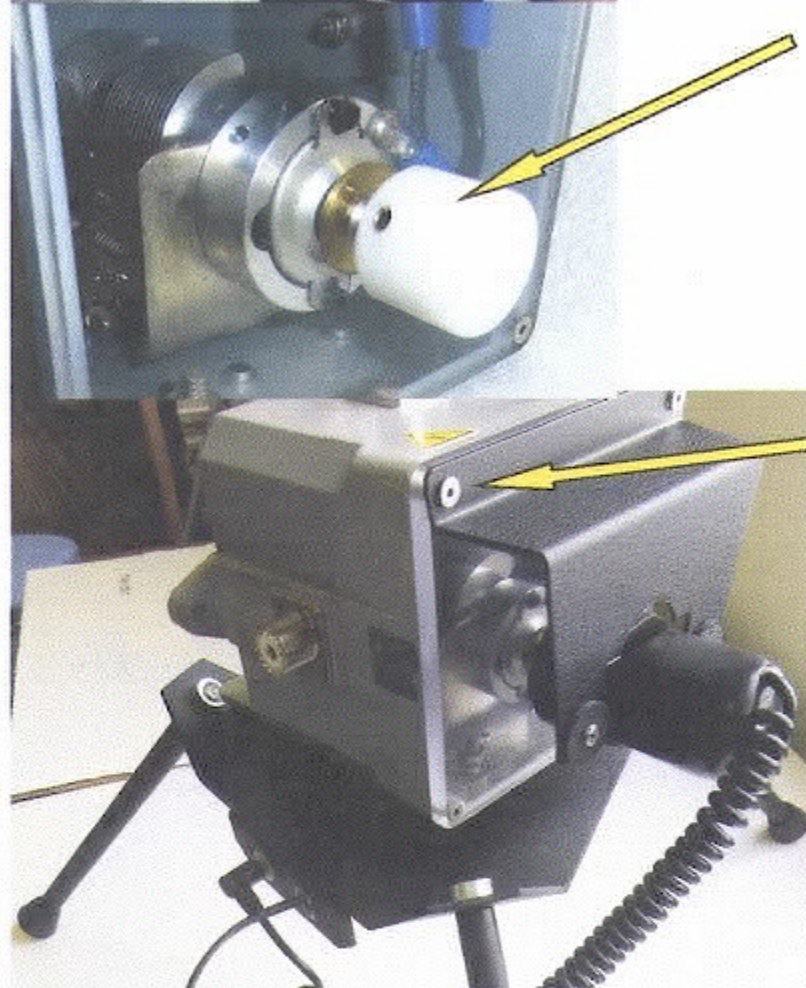
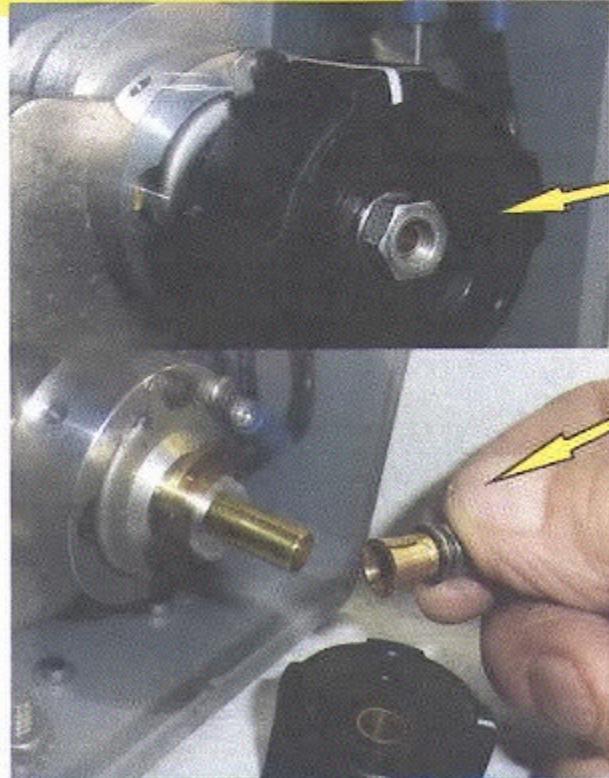
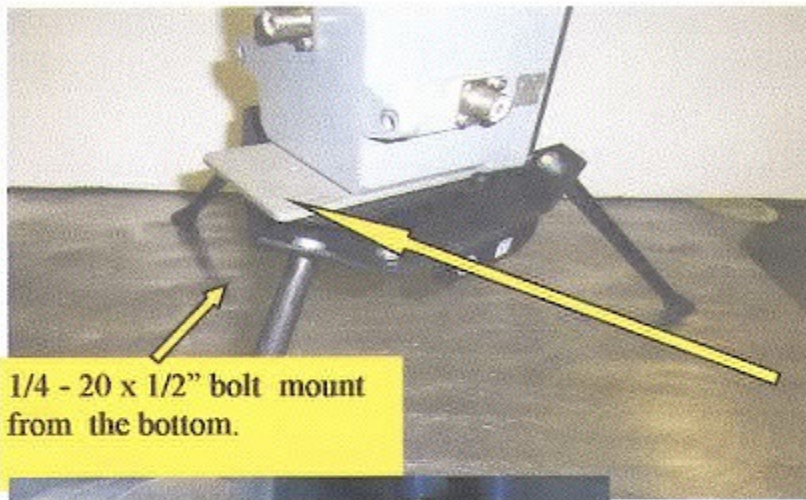
The right or left positions of the megahertz slide switch are designed for fine tuning. They can be pressed repeatedly while watching signal strength meter for peak performance. If they are held down for about five seconds system will automatically go into the fast mode.

It's important to use an alkaline battery for long life. Carbon batteries say extra heavy duty but alkaline have 10 times the power. The motors will consume in the neighborhood of 50 mA depending on the speed.



RTRR-1

(Remote Tuning Remote Rotation) Assembly Instructions



1) Install legs as illustrated.

2) There is a 1/4 -20 threaded hole in the tuning box which will now be used to attach the RTRR-1 using a 1/4 -20 bolt provided.

3) Loosen this nut one to two turns. Pull on the knob and it will come off tuning shaft.

4) Note: this is a compression fitting it is the only way the knob is held to the shaft so you will be you want to keep this compression fitting with the knob. It is not needed with the RTRR-1.

5) Next install the plastic drive knob with the set screw and Allen wrench provided. This will serve to drive the tuning capacitor with an internal O-ring on the tuning motor

6) Remove two screws from the tuning box with the 5/64th" Allen wrench provided so the tuning motor assembly can be installed.

7) Two screws on either side of motor should be loosened. **This will allow perfect alignment with the tuning knob.** This is very important as having side pressure will cause the motor to run slow. Once the motor is aligned these screws should be tightened.

8) Push the tuning motor/mounting bracket over the tuning knob and install top screws with the Allen wrench, then tighten motor screws with Phillips screwdriver.



Can be used with 1/4" or 3/8" standard tripod fittings which attach from the bottom

Parts list

- 3) Legs
- 1) Drive base
- 1) Tuning motor/mounting bracket
- 1) Plastic drive knob
- 1) Hand control with alkaline battery
- 25 Ft 4-conductor phone cable
- 1) 5/64" Allen wrench (long version)
- 1) 1/4"- 20 x 1/2" bolt
- 1) 10/24 set screw with 3/32 Allen wrench

Standard 4-conductor telephone cable provides power directly to rotator motor and, through the 1/8" jack, to the tuning motor. The tuning motor has a coiled cord that will stretch to 6 ft. but it cannot be wrapped in the same direction around and around. So you should sometimes go left and sometimes right.

Note when tuner reaches the end of travel don't worry. There is a rubber O-ring in the drive assembly that allows slippage. There is also a friction reducer inside that will slip at the end of travel to protect the motor and tuner.